



# **OLIS MOBILE**

NAV VALIDATION V1.0

USER GUIDE

**caceis**  
INVESTOR SERVICES

# INDEX

1. QUICK START
2. CONNECTION
3. DASHBOARD
4. YOUR NAV LIST
5. NAV DETAILS
6. SHARE DETAILS
7. ACTION SCREENS
8. CONTACTING MY ACCOUNTANT
9. HELP US TO IMPROVE OLIS MOBILE!

# 1. QUICK START

---

OLIS Mobile is viewed through your usual mobile browser, simply click on the link below or paste your address in the address bar:

[www.olisnet.com/olismobile](http://www.olisnet.com/olismobile)

## WEBAPP MODE

Within 2 « taps » and without downloading any app, you can benefit from OLIS Mobile's full functionalities:



---

From SAFARI's bottom tool bar tap the following icon:



Then tap  
"add to homescreen"

Open your mobile browser menu with following icon:



Then tap  
"add to homescreen"

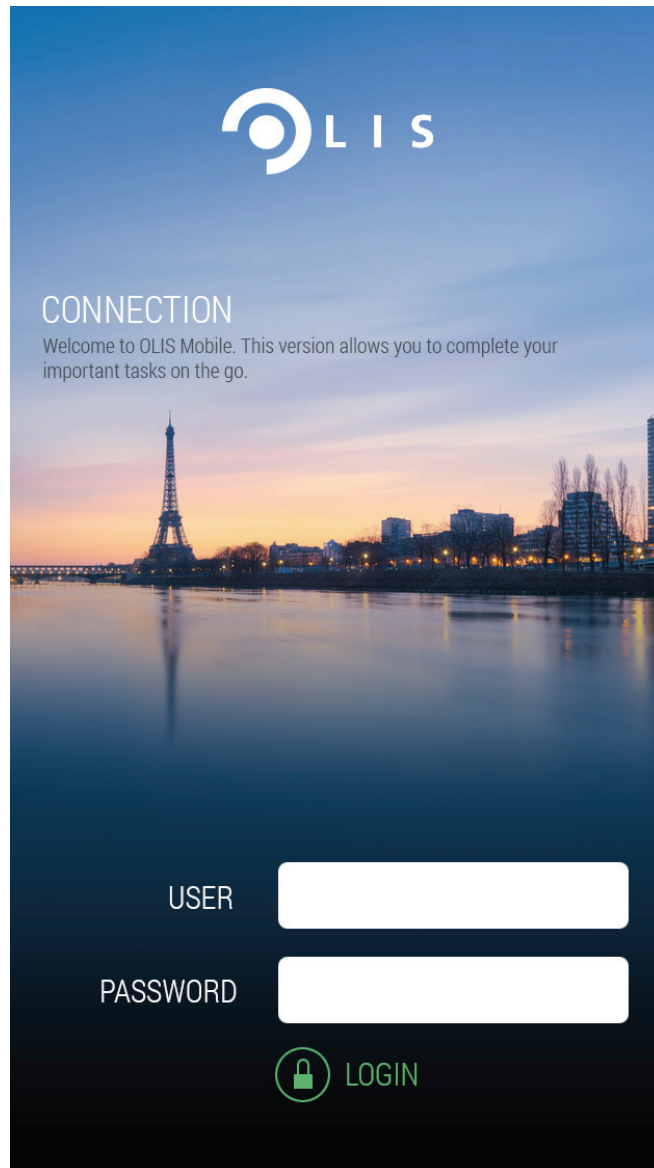
A new "OLIS" icon will be displayed on your dashboard. Use it for each of your connections for a quick and easy access



## 2. CONNECTION

---

You are used to connecting to OLIS Portal?  
Don't change anything!  
Use the same User Profile to easily connect to OLIS Mobile



You have trouble connecting or can't remember your password?  
Please contact your usual OLIS RM

France  
+33(0)1 57 78 12 12  
[olis.services@caceis.com](mailto:olis.services@caceis.com)

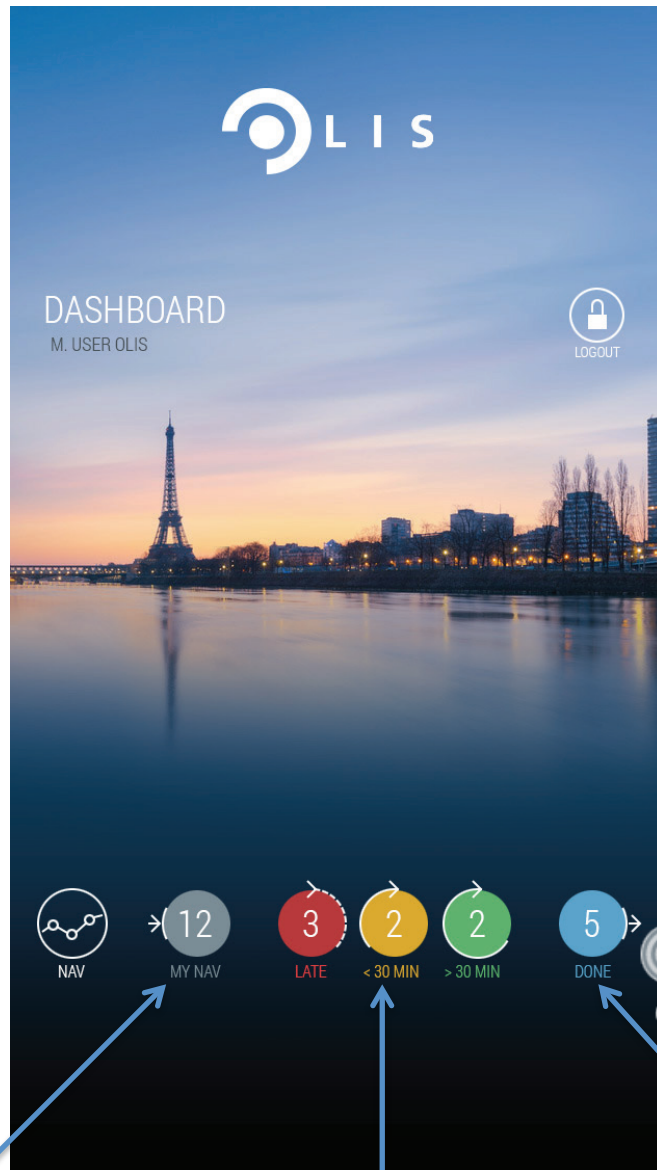
Luxembourg  
+352 47 67 28 33  
[olis@caceis.com](mailto:olis@caceis.com)

Germany  
+49 89 5400 3535  
[olis-cmt-hotline@caceis.com](mailto:olis-cmt-hotline@caceis.com)

# 3. DASHBOARD

---

Welcome to OLIS Mobile!  
As soon as you are connected your own dashboard will display your daily NAV.



ALL YOUR  
DAILY NAV

YOUR NAV TO SIGN OFF  
SORTED BY CUT OFF

YOUR SIGNED  
OFF NAV

“Tap” on a bubble displays the relevant filtered list  
(All / by cut off / signed off)

# 4. NAV LIST

You can directly make your validation choices through the NAV list, go to the NAV Details for in depth information or contact your accountant

NAV	MY NAV	LATE	< 30 MIN	> 30 MIN	DONE
NAV	12	3	2	2	5

Annotations:

- View NAV details
- Display quick action bar
- Filter NAV list

### ACTIONS :

- NAV details
- Contacts and messenger
- Validate
- Refuse
- Request sign-off cancellation

# 5. NAV DETAILS

Through the NAV details page you can view the main NAV information and zoom on each share. All the validation actions and contact functions are directly available.

The screenshot shows the LIS NAV details page for 'YFUND SECURITIES' (FR0053638756). The page displays the following information:

- Header:** LIS logo, menu icon, and a red button with a hand icon.
- NAV Summary:** YFUND SECURITIES, 009278, 6,923,191,074.50 €, and a green arrow indicating a 0.023% change.
- Metadata:** EUR, LUX, 12/09/15, 10:30, and a 'Forced price' button.
- Share Grid:** Five share cards (C0, C1, C2, C3) showing NAV values and percentage changes. Each card includes a line chart and a 'VAR %' label.
- Bottom Bar:** A back arrow, a red 'REFUSE' button with a hand icon, and a green 'VALIDATE' button with a thumbs-up icon.

Annotations with hand icons and blue arrows point to the following elements:

- Go back to my NAV list:** Points to the top-left corner of the page.
- Display messages and contacts:** Points to the red button in the top right.
- View share details:** Points to the C1 share card.
- Choose an action:** Points to the 'VALIDATE' button in the bottom bar.

# 6. SHARE DETAILS

From the share details page, you can review each share information and zoom on a graphical NAV history.

The screenshot shows the share details page for MYFUND SECURITIES (009278). The current share price is 146.28 EUR, up 0.017%. A line chart displays the NAV history from February to December, with NAV at 0.017% and BM at 0.016%. A table below the chart shows NAV and BENCH values for D-1, MONTH, and YEAR periods. At the bottom, there are 'REFUSE' and 'VALIDATE' buttons. Annotations include: 'Go Back to NAV details' pointing to the top left; 'View next share' pointing to the top right; and 'Choose an action' pointing to the 'VALIDATE' button.

	D-1	MONTH	YEAR
NAV	124.95 € ▲ 0.012%	273.82 € ▼ -0.008%	409.34 € ▲ 0.012%
BENCH	124.95 € ▲ 0.012%	273.82 € ▲ 0.008%	409.34 € ▲ 0.012%

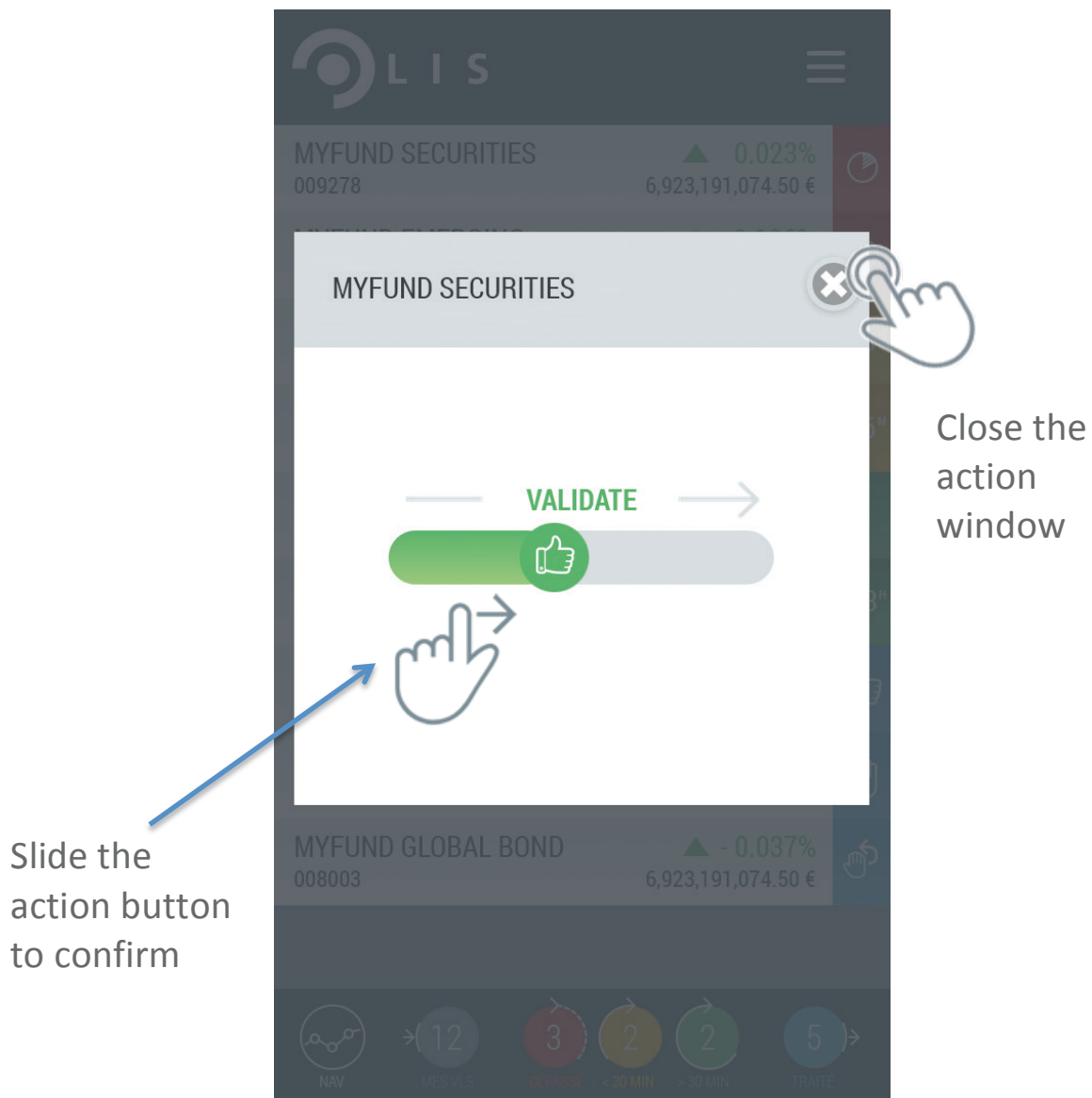
## GRAPHICAL ZOOM



## 7.ACTION SCREENS

---

For your safety, each action necessitates two steps: open the relevant action window and confirm by sliding a physical check.



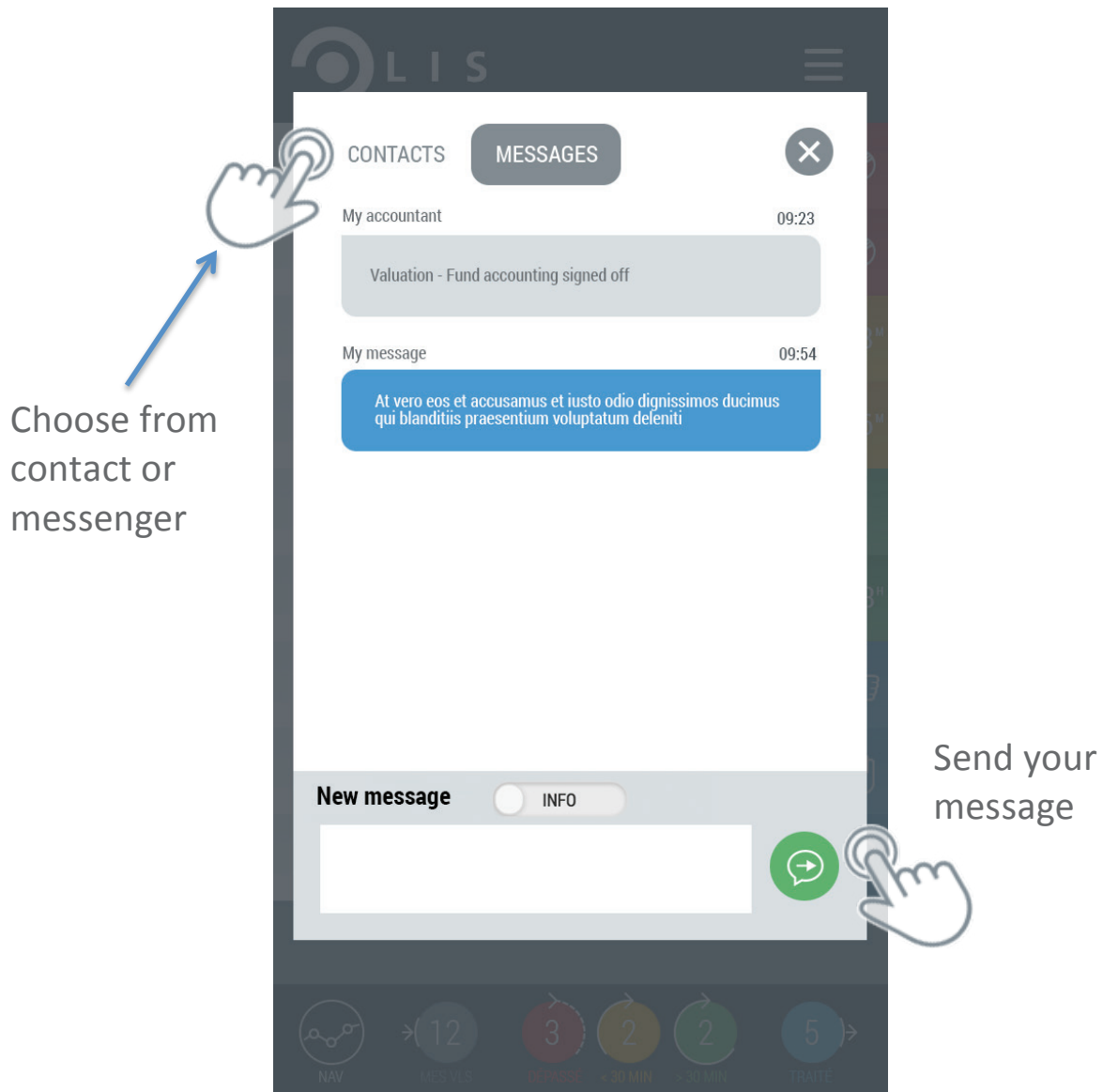
OLIS Mobile checks that your action has been taken into account and displays a confirmation on your screen.

For any refusal or sign-off cancellation request, you have to select a reason and write a comment to complete your action.

## 8. CONTACT MY ACCOUNTANT

---

You can contact the valuation teams at any time, either through the integrated messenger or by using the contact sheet to directly call or write an e-mail.



## 9. HELP US TO IMPROVE OLIS MOBILE!

---

We are happy to welcome you amongst the first users of  
OLIS Mobile.

We already have a number of improvements under work and are  
very interested in hearing about your user experience your ideas and  
suggestions.

Feel free to contact us on:

[olismobile@caceis.com](mailto:olismobile@caceis.com)

...And help us to improve your OLIS Mobile!